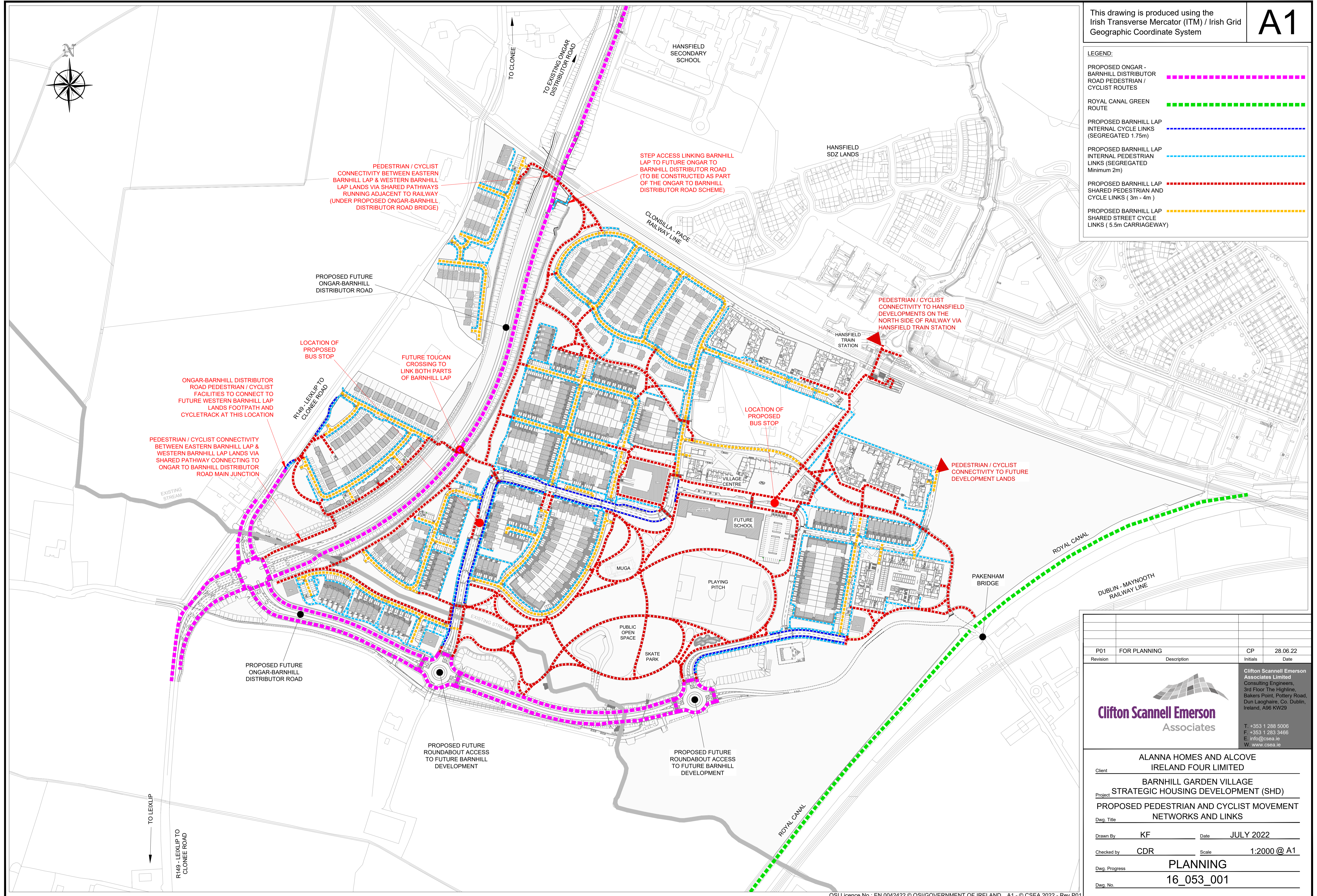
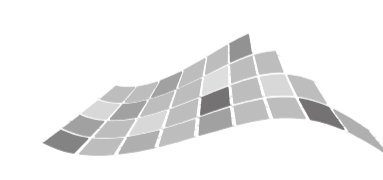


LEGEND:

- PROPOSED ONGAR - BARNHILL DISTRIBUTOR ROAD PEDESTRIAN / CYCLIST ROUTES - - - - -
- ROYAL CANAL GREEN ROUTE - - - - -
- PROPOSED BARNHILL LAP INTERNAL CYCLE LINKS (SEGREGATED 1.75m) - - - - -
- PROPOSED BARNHILL LAP INTERNAL PEDESTRIAN LINKS (SEGREGATED Minimum 2m) - - - - -
- PROPOSED BARNHILL LAP SHARED PEDESTRIAN AND CYCLE LINKS (3m - 4m) - - - - -
- PROPOSED BARNHILL LAP SHARED STREET CYCLE LINKS (5.5m CARRIAGEWAY) - - - - -



P01	FOR PLANNING	CP	28.06.22
Revision	Description	Initials	Date
 Clifton Scannell Emerson Associates		Clifton Scannell Emerson Associates Limited Consulting Engineers, 3rd Floor The Highline, Bakers Point, Pottary Road, Dun Laoghaire, Co. Dublin, Ireland, A96 KW29 T: +353 1 288 5006 F: +353 1 283 3466 E: info@csea.ie W: www.csea.ie	
Client: ALANNA HOMES AND ALCOVE IRELAND FOUR LIMITED			
Project: BARNHILL GARDEN VILLAGE STRATEGIC HOUSING DEVELOPMENT (SHD)			
Dwg. Title: PROPOSED PEDESTRIAN AND CYCLIST MOVEMENT NETWORKS AND LINKS			
Drawn By:	KF	Date:	JULY 2022
Checked by:	CDR	Scale:	1:2000 @ A1
Dwg. Progress:	PLANNING		
Dwg. No.:	16_053_001		